

PAS CABLE GEN1 TO GEN2 ADAPTION

Revision history:

#	Description	Sign	Document release date
00	Preliminary draft	OBJ	11feb2011
01	Initial rwk instruction	OBJ	11feb2011
02			
03			

Problem:

- Connector on 541.3080.A will not fit new revision of PAS pump.

Solution:

- Swap connector on cable

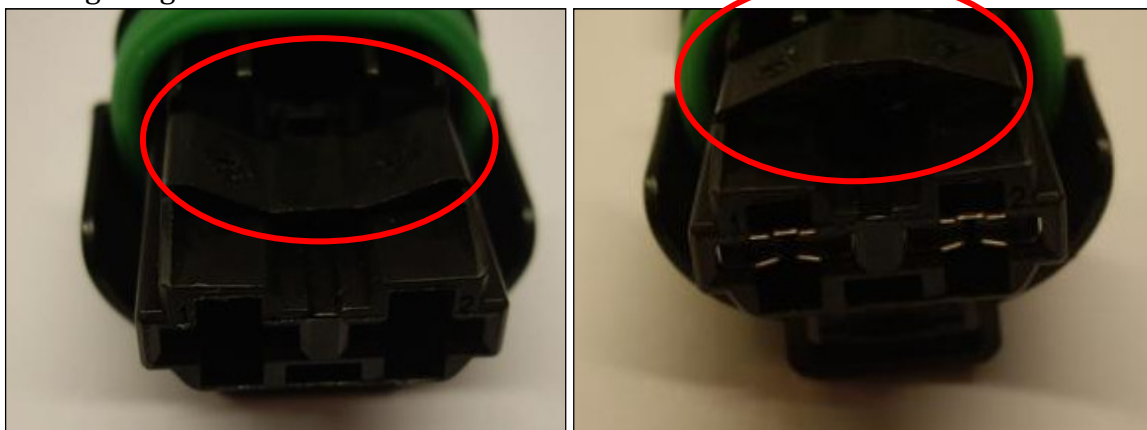
Parts needed for rework:

1 pcs. 541.2080.A CABLE PAS PUMP TO POWER

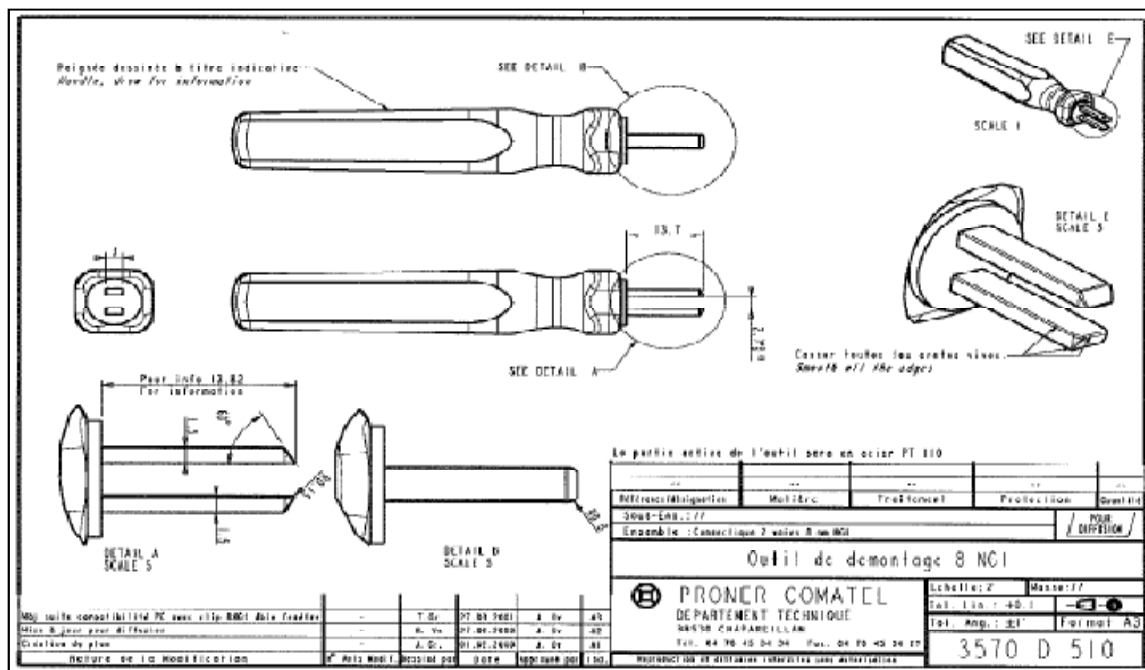
1 pcs. 541.3080.x CABLE PAS PUMP TO POWER (GEN2 harness)

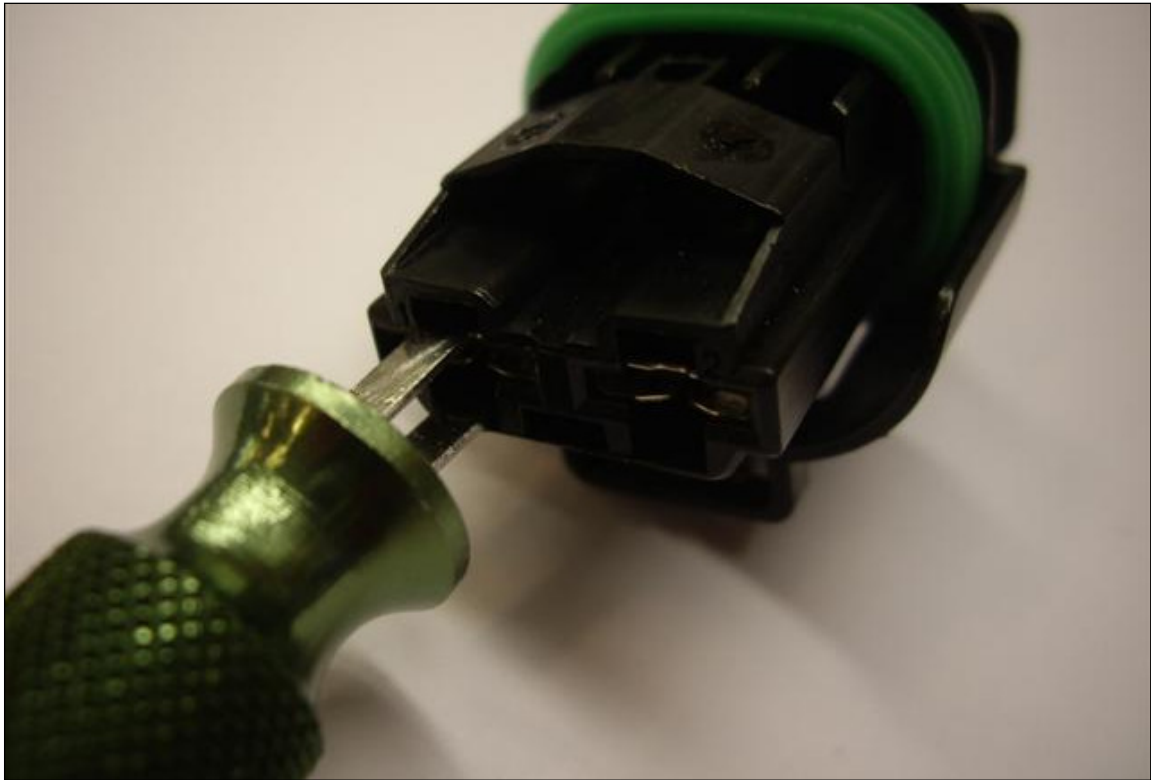
Work instruction:

1. Locate GEN1 PAS harness, and open the secondary lock on connector, by lifting up the locking flange

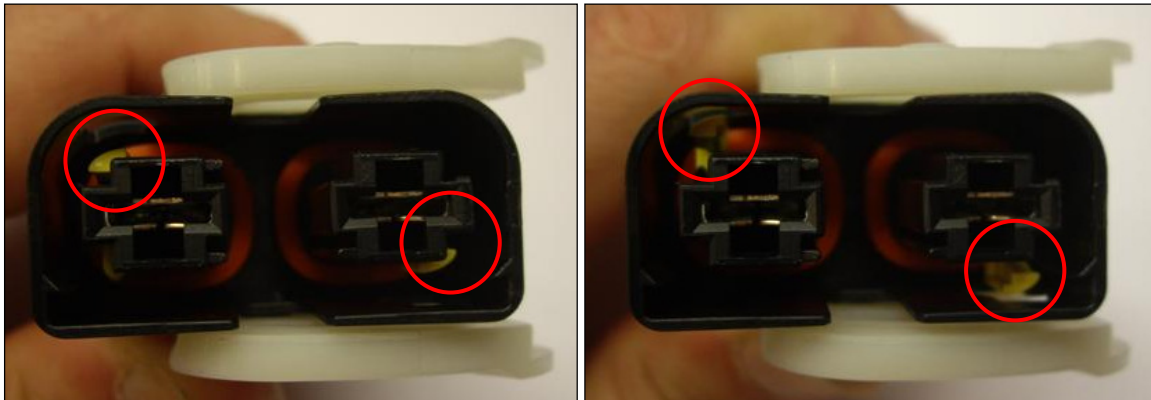


2. Carefully, using a terminal release tool, release locking tabs inside the connector-housing, and pull terminal 1 and 2 free from the connector-housing. Scrap the connector housin



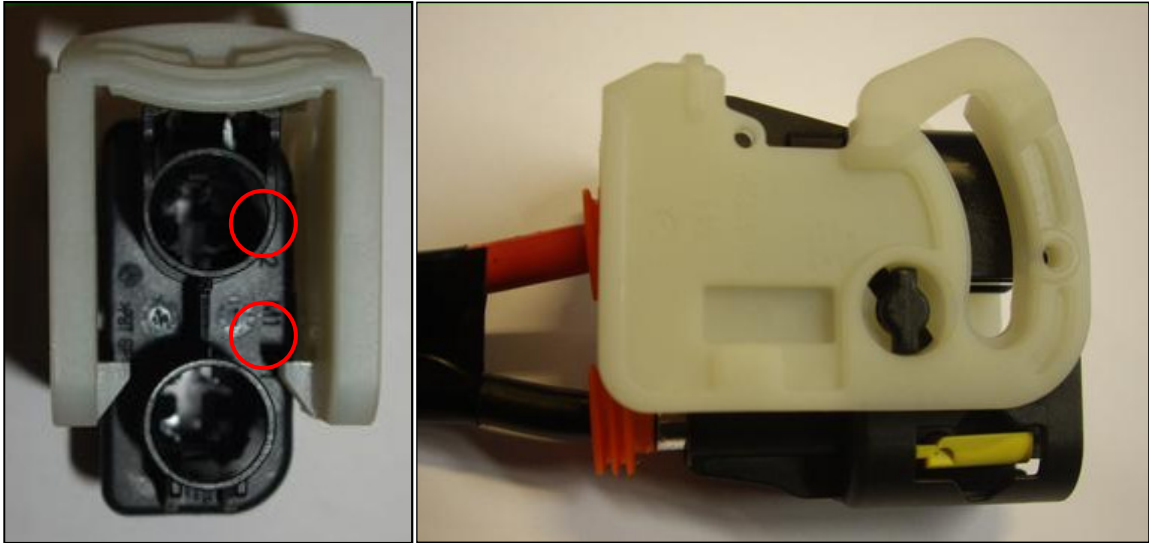


3. Locate the 541.3080 harness, and remove the GEN 2 connector as described below
4. Using a pick, carefully lift and release secondary locks. OBS; do not lift more than illustrated below

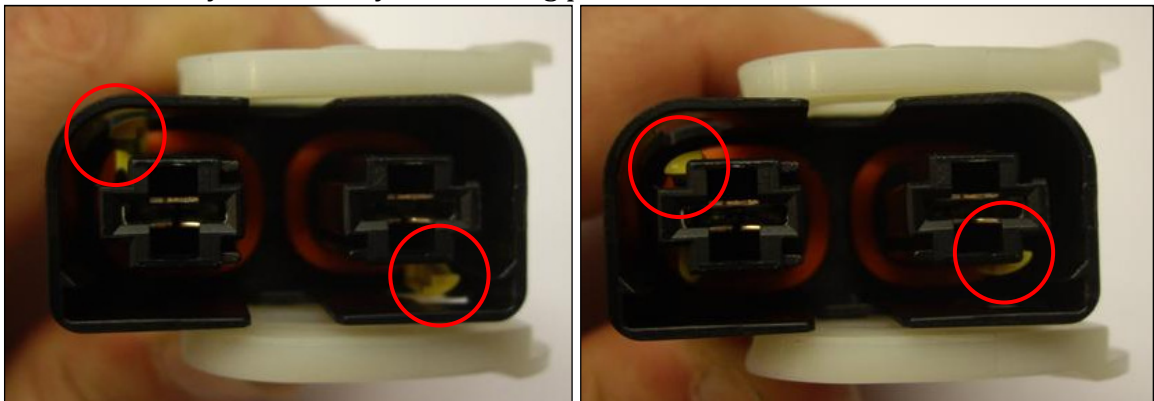


5. Release cables from connector, and scrap GEN2 harness. Keep only the connector

6. **Position cables from GEN1 harness in the GEN2 connector. OBS: beware of correct pinning. RED CABLE = PIN 2, BLACK CABLE = PIN 1**



7. Press secondary locks firmly into locking position



8. Test, using only gentle hand force, by pulling, if cables are properly located and locked

Mark cable label with text: "GEN2 adaptation"